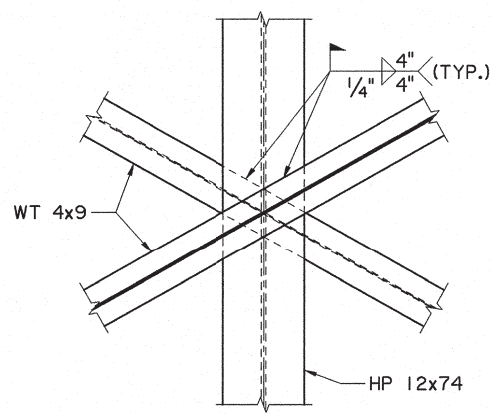
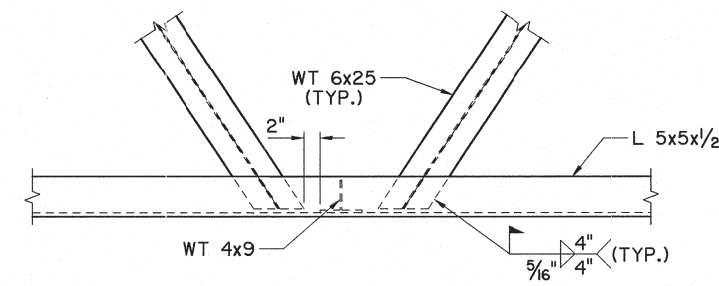


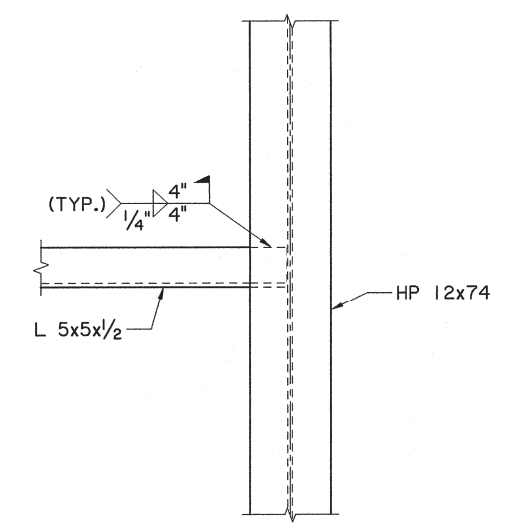
DETAIL "A"



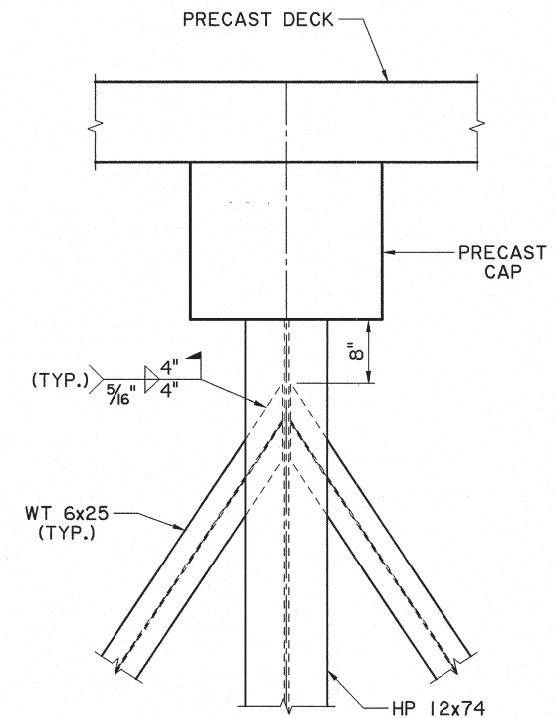
DETAIL "B"



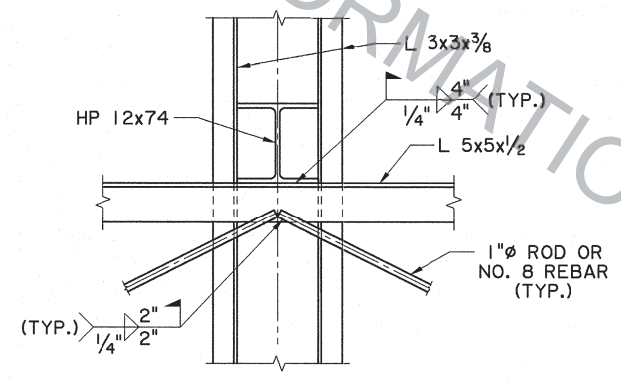
DETAIL "C"



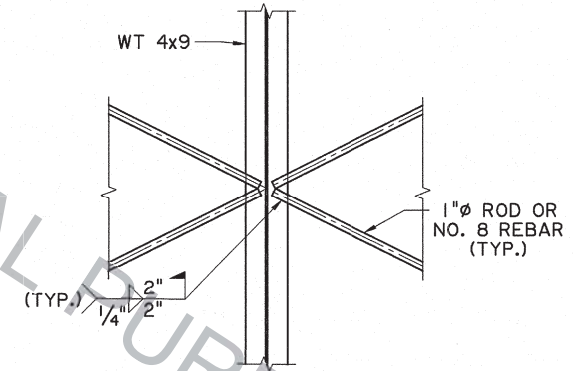
DETAIL "D"



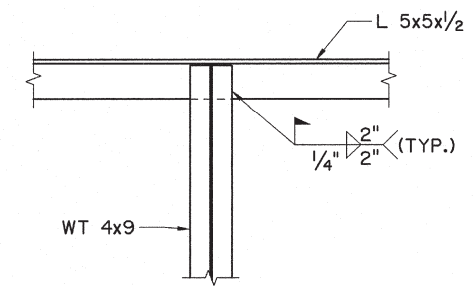
DETAIL "E"



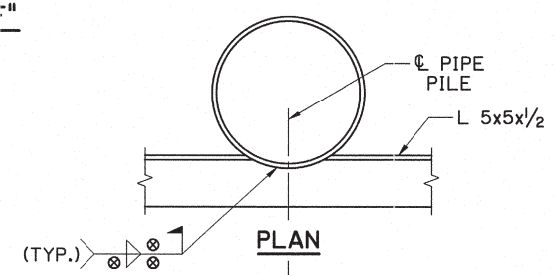
DETAIL "F"



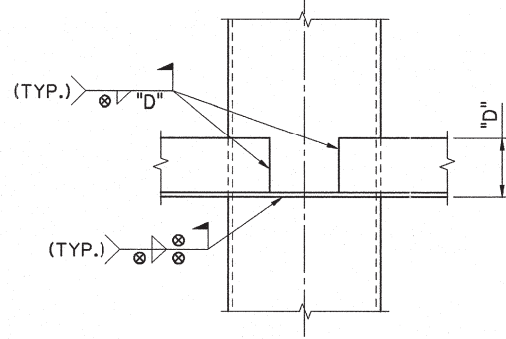
DETAIL "G"



DETAIL "H"



PLAN



ELEVATION

EXAMPLE DETAIL  
CONNECTION OF ANGLE MEMBER  
TO PIPE PILE

⊗ WHEN PIPE PILES ARE USED IN LIEU OF H-PILES, THE "WT" AND ANGLE MEMBERS SHALL BE CUT SO THAT THEY FIT FLUSH WITH THE PILES PRIOR TO WELDING. THE MINIMUM WELD SIZE AND LENGTH FOR THE CONNECTION OF THESE MEMBERS TO THE PILES, SHALL BE AS DETAILED FOR THE H-PILE CONNECTIONS.



FOR INFORMATIONAL PURPOSES ONLY

SHEET NUMBER		PARISH	CONTROL SECTION	STATE	PROJECT
DESIGNED	J. PELTIER	CHECKED	M. HEBERT	REVIEWED	P. VAUGHN
DATE		DATE		DATE	
NO.		NO.		NO.	
DATE		DATE		DATE	
REVISION OR CHANGE ORDER DESCRIPTION		BY		DATE	
<b>SWAY BRACING DETAILS</b>					
BD.2.B.1.0.06 PRECAST PANEL DETOUR BRIDGE					
BRIDGE 8 STRUCTURAL DESIGN					